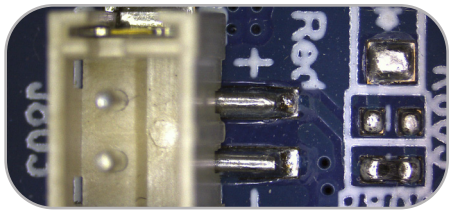




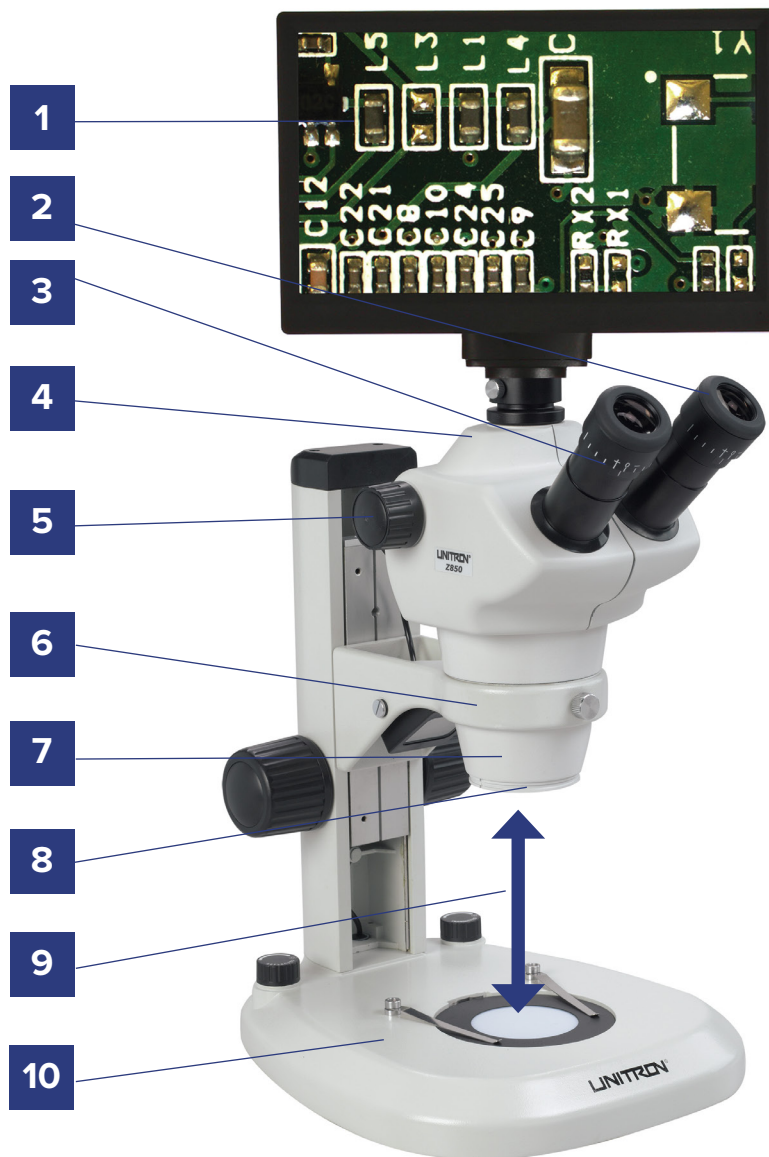
**Binocular Z850  
with plain focusing stand  
(CAT# 13100)**



Z850 zoom stereo microscopes feature an ideal 6.3:1 zoom ratio for industrial inspection, assembly, quality control, OEM integration, research and educational applications requiring a higher magnification range. With a Greenough optical design, the Z850 is a versatile, high performance, ergonomically designed zoom stereo microscope ruggedly built to withstand years of heavy usage. Choose from binocular or trinocular viewing bodies and a wide variety of stands and illumination options. Add a digital camera (requires adapter) to the trinocular models for expanded capabilities including documentation, measurement & analysis, and training.

# Key Features

- Optional camera or camera with monitor (requires trinocular head and adapter).
- 10x/22mm eyepieces are standard.
- Adjustable interpupillary distance for comfortable viewing.
- Choice of binocular or trinocular (fixed 50:50 to eyepieces and camera).
- 0.8x – 5.0x zoom range. Knobs on both sides of microscope body for operation with either hand.
- Ø76mm body fits standard stereo microscope focus mounts.
- Greenough optical design delivers dependable 3-dimensional views of the sample.
- 1x protective glass lens shield with mounting groove for ring lights.
- 115mm working distance (with 1x objective) for easy access to sample.
- Variety of illuminated and non-illuminated stands to meet your needs. External illumination (e.g., ring or goose neck lights) also available.



# A Wide Variety of Solutions

A wide range of stands and illumination options are available to meet the needs of any application.

UNITRON offers plain focusing stands, LED stands, boom stands, articulating (flex) arm stands, pole stands, diascope illumination stands, plus a variety of LED ring lights and fiber optic illuminators.



**Z850 with LED stand and integrated LED illumination (CAT# 13101)**



**Trinocular Z850 with pole stand (CAT# 13134) and Excelis™ HD camera (CAT# AU- 600-HD)**



**Z850 with diascope stand and integrated LED illumination (CAT# 13110)**



**Binocular Z850 with ball bearing boom stand and quad LED ring light (CAT# 13106-1)**



**Z850 with flex arm stand and LED ring light (CAT# 13107-2)**

## Specifications

<b>Optical System</b>	Greenough optical design; 0.8x - 5.0x zoom range
<b>Viewing Body</b>	45° inclined binocular head with fixed eyepiece tube or trinocular head with 50:50 light split; Ø76mm body; interpupillary distance 52mm - 75mm; click stops at 1x, 2x, 3x, 4x and 5x zoom limits
<b>Eyepieces</b>	WF10x/22mm; WF10x/25mm; WF15x/16mm; WF20x/12.5mm; all with diopter adjustment
<b>Magnification</b>	8x – 50x magnification range with 10x eyepieces and included 1x glass lens shield
<b>Auxiliary Objectives</b>	1x glass shield (included); Optional: 0.5x, 0.7x, 2x
<b>Working Distance</b>	115mm with included 1x lens; with optional auxiliary objectives: 211mm with 0.5x, 137mm with 0.7x, 43.5mm with 2x
<b>Stands &amp; Illumination</b>	Variety of plain focusing stands, pole stands, diascopic stands, boom stands, ball bearing boom stands, articulating arms; wide variety of ring lights and fiber optic illuminators
<b>Camera Adapters</b> (trinocular models only)	Optional: 0.5x C-mount adapter
<b>Digital Cameras</b>	Excelis™ and Teledyne Lumenera® digital cameras
<b>Warranty</b>	5 5 year limited warranty for parts and labor; 1 year warranty on electronic components and LED bulb

## Optical Data

Auxiliary Objective	Working Distance (mm)	EYEPIECE					
		WF10x/22mm		WF15x/16mm		WF20x/12.5mm	
		Magnification Range	FOV (mm)	Magnification Range	FOV (mm)	Magnification Range	FOV (mm)
	115	8x – 50x	27.5 – 4.4	12x – 75x	20.0 – 3.2	16x – 100x	15.6 – 2.5
<b>0.5x</b>	211	4x – 25x	55.0 – 8.8	6x – 37.5x	40.0 – 6.4	8x – 50x	31.2 – 5.0
<b>0.7x</b>	136	5.6 – 75x	39.3 – 6.3	8.4x – 52.5x	28.6 – 4.6	11.2x – 70x	21.4 – 3.4
<b>2x</b>	43.5	16x – 100x	13.8 – 2.2	24x – 150x	10.0 – 1.6	32x – 200x	7.8 – 1.3