

928 Series

Carbon/Nitrogen/Sulfur Analysis by Combustion



LECO
EMPOWERING RESULTS

928 Series

Carbon/Nitrogen/Sulfur Analysis by Combustion

By incorporating state-of-the-art hardware and an on-board, touch-screen software platform, the 928 Series allows you to easily handle the most demanding sample applications and increase your productivity. The core capabilities and performance of previous generations of LECO macro combustion instruments have been maintained, while key improvements have been made in throughput, uptime, and reliability. Macro sample mass ability (up to 3 grams for nitrogen/protein model regardless of the sample carbon content) paired with rapid analysis times and a low cost-per-analysis make the 928 Series ideal for characteristically heterogeneous, difficult-to-prepare, or low analyte level samples.



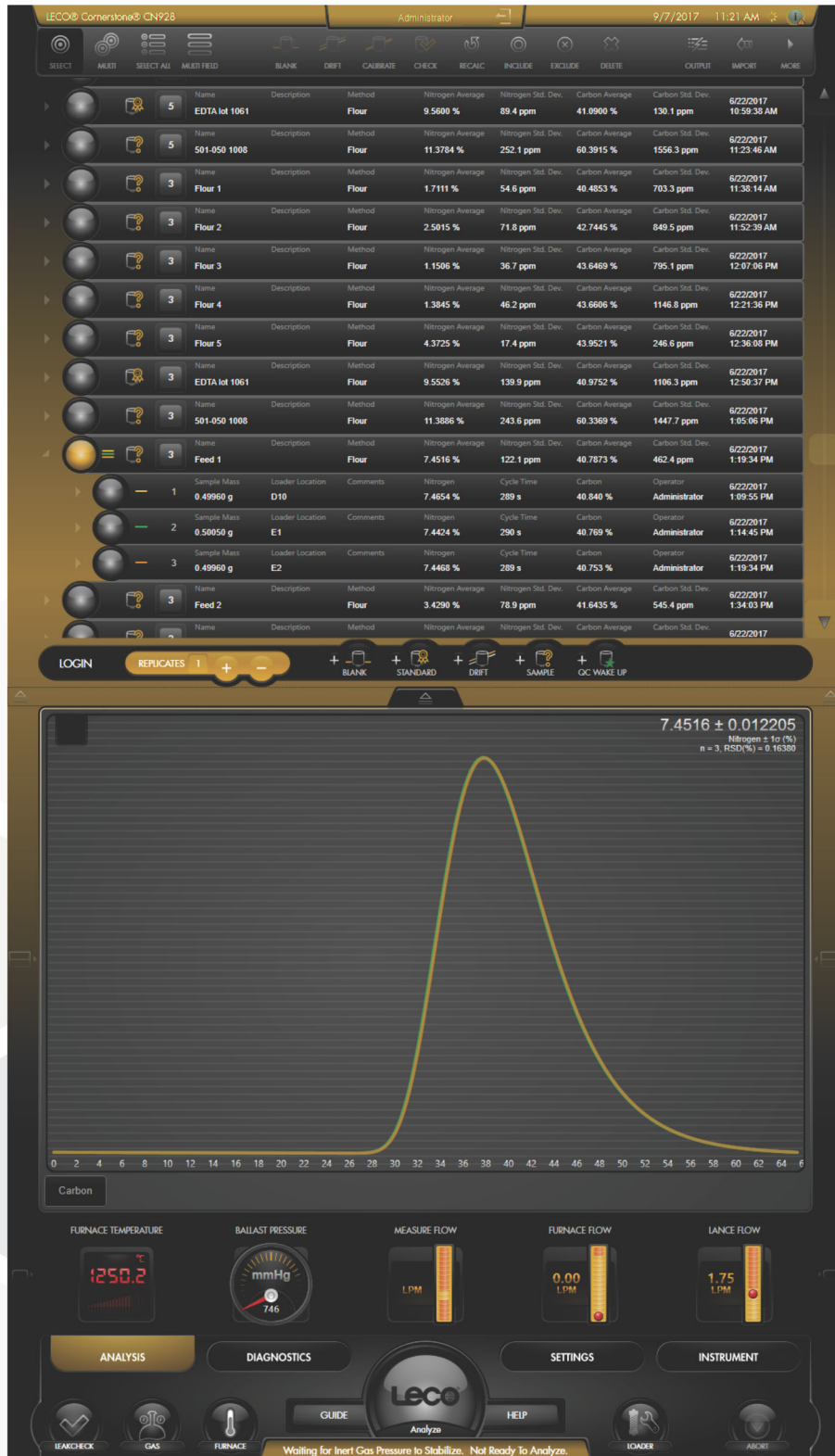
Maximize lab efficiency and productivity with unmatched sample throughput coupled with superior instrument uptime

- Rapid cycle time of 5 minutes
- Extended reagent lifetimes including a reduction reagent tube lifetime of over 4,000 samples
- 100-sample position autoloader for sequential and non-sequential analysis



User-Friendly Cornerstone® Brand Software

LECO's exclusive Cornerstone brand software with touch-screen interface enables complete access to analysis control, method settings, diagnostics, reporting, and more in a highly organized, intuitive, and immersive environment. Designed through a collaboration of customer feedback and innovative engineering, Cornerstone features all of the routine day-to-day operations within a single Analysis screen designed for speed and ease-of-use. Our innovative grouping of sample data into sets and replicates simplifies the data output and automatically calculates relevant statistics, alleviating the need for additional data processing.



Analysis

Software Features & Benefits

The software is divided into four main sections—Analysis, Diagnostics, Settings, and Instrument—for simplified navigation and organization. Toolbars, sliders, and drop-down menus make it easy to set parameters for calibration and data processing. The software also includes real-time monitoring of ambient parameters, with fully animated system diagrams.

Advanced interactive diagnostic features include a thorough digital on-board manual, maintenance animations, photo illustrations, and screen captures that quickly provide the direction needed without having to refer to multiple manuals.

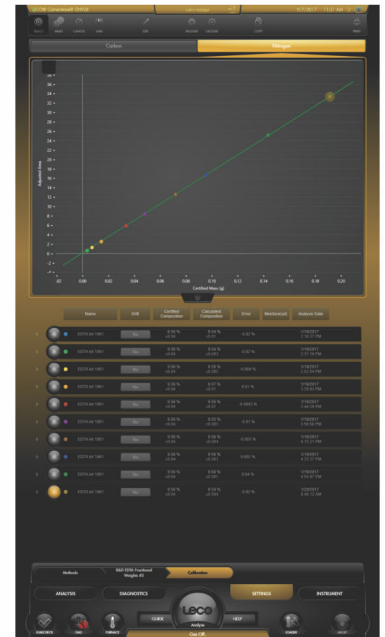
Cornerstone also supports a multilingual interface, user permissions, extended data archiving and filtering, compatibility with various Laboratory Information Management Systems (LIMS), and flexible reporting capabilities. Compliance to FDA regulations 21 CFR Part 11 for a closed analytical system is also supported.



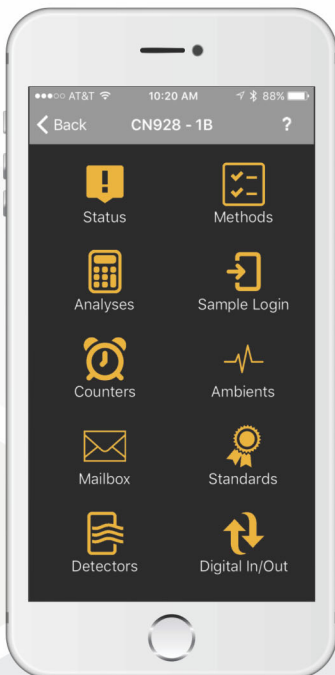
Diagnostics > Ambients



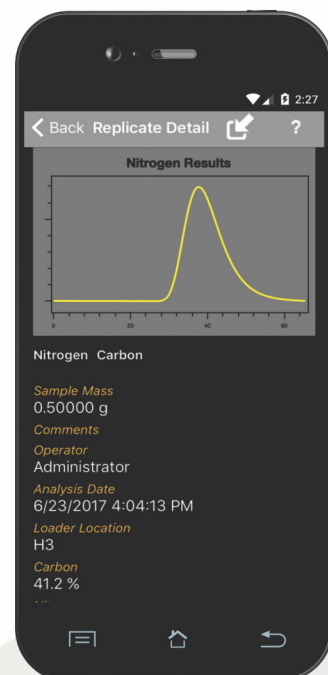
Instrument > Furnace



Settings > Calibration



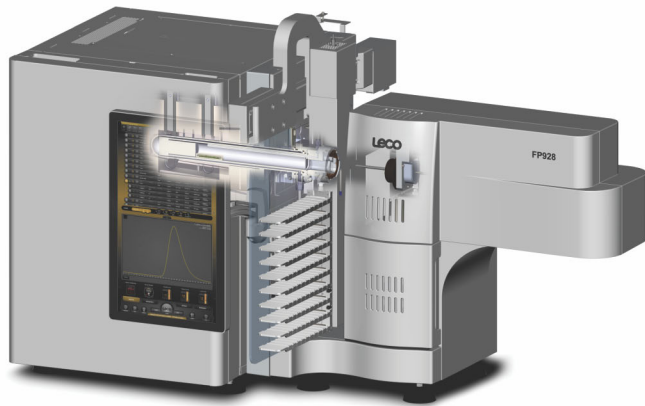
An optional Cornerstone Mobile application feature enables remote viewing of the instrument software from a smartphone, tablet, or PC. It can also be programmed to set automatic notifications from the instrument against predefined software conditions using e-mail, text message, or the Cornerstone Mobile application.



Instrument Highlights and Features

Rugged design resulting in unparalleled versatility for the most demanding applications

- Horizontal ceramic furnace with an exclusive oxygen environment ensures the complete oxidation of macro samples with maximum temperatures up to 1450 °C
- Large, open, and reusable ceramic sample boats facilitate the handling and combustion of macro samples
- Sample ash is retained in boat for post-analysis removal, eliminating furnace tube maintenance
- Thermal conductivity cell supports the flexibility of using either helium or argon as a carrier gas without a hardware change

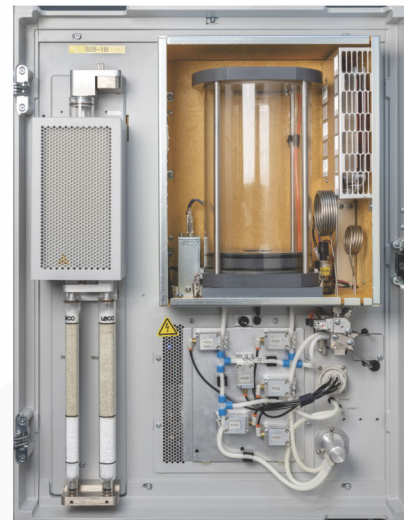


Low operating cost

- Reagent free, high-efficiency furnace with intelligent control optimizes furnace reliability by extending the heating element and ceramic lifetime
- Thermoelectric cooler eliminates the use of chemical desiccant reagents for the removal of combustion gas moisture in the Nitrogen/Protein and Carbon/Nitrogen models
- Combustion gas aliquot system provides an extended and consistent reagent lifetime regardless of sample mass, matrix, or carbon content, including a 4000 sample reduction tube reagent lifetime
- Dual loop aliquot doser provides the flexibility to optimize methods based upon sample element concentration (low/high), or analysis cost and uptime

Operator Centered Design

- Boom-mounted touch-screen user interface promotes an ergonomic workspace and optimized workflow while reducing system bench space requirements
- Open access to all reagent tubes and common maintenance areas with quick-release features speeds up and simplifies preventive maintenance routines, ensuring a robust and reliable instrument with superior uptime
- Cornerstone Mobile remote software keeps the user updated from their smartphone on the instrument's analysis batch progress, performance, and status while away



Reliability with Trusted Service and Support

- Knowledgeable sales force with a customer-centered focus dedicated to helping you understand and identify the best instrumentation fit for your application
- State-of-the-art Technical Service Laboratory with experienced technical application chemists to assist in method development and other application related requests
- Global and regional LECO service network comprised of regional support centers and over 25 international LECO subsidiaries, dedicated to providing service and support offerings, including field service visits over the lifetime of the instrument

Model Availability

Available in various models, the 928 Series is ideal for the most challenging applications and is compliant with ISO, AOAC, AACC, AOCS, and ASBC approved methods of analysis.



FP928

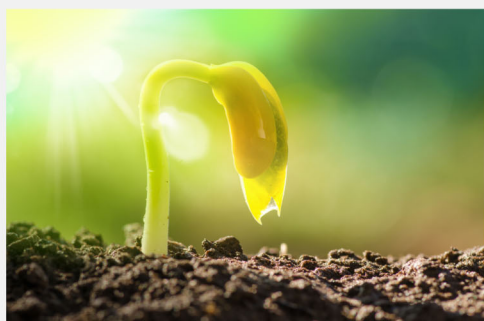
From unprocessed materials to final consumer-ready products, the FP928 determines nitrogen/protein in organic materials using a sample mass up to 3 grams.

- Meats
- Feeds
- Petfood
- Milled products

CN928

Quickly and easily analyze carbon and nitrogen in your most difficult-to-prepare or high-ash environmental and agricultural samples.

- Soil
- Plant tissue



CNS928

Quickly and easily analyze carbon, nitrogen, and sulfur simultaneously from one sample in agronomy and agricultural materials

- Soil
- Plant tissue

828 Series Carbon/Nitrogen

- Features a rapid analysis cycle time of 2.8 minutes or less with the ability to accommodate macro samples, delivering unparalleled throughput for diverse applications
- Extended reagent lifetimes maximize instrument uptime and lowers operating costs
- Operator-centered design with touch-screen Cornerstone brand software promotes an ergonomic workspace and optimized workflow



LECO, Cornerstone are registered trademarks of LECO Corporation.

3000 Lakeview Avenue | St. Joseph, MI 49085 | 800-292-6141 | Phone: 269-985-5496
info@leco.com | www.leco.com | ISO-9001:2015 Q-994 | LECO is a registered trademark of LECO Corporation.

LECO Corporation

LECO

EMPOWERING RESULTS

© 2018 LECO Corporation